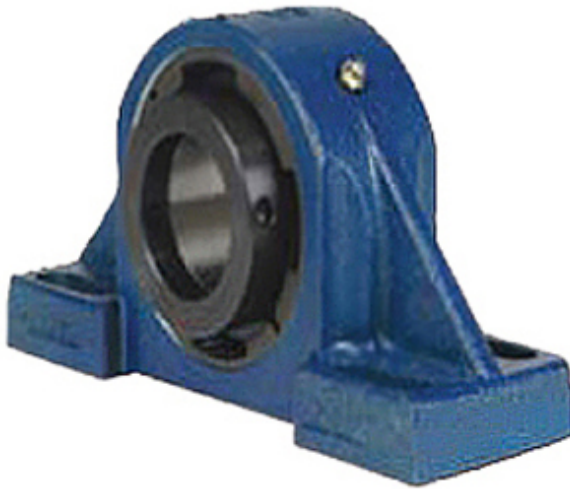




BEARING Material Product LIMITED



5 Inch | 127 Millimeter x 6.04 Inch | 153.416
Millimeter x 5.5 Inch | 139.7 Millimeter QM
INDUSTRIES QMPF26J500SM Pillow Block
Bearings

Bearing No. QMPF26J500SM

QMPF26J500SM Bearing 2D drawings and 3D CAD
models

Category	Pillow Block Bearings
Inventory	0.0
Manufacturer Name	TIMKEN
Minimum Buy Quantity	N/A
Weight	56.296
EAN	0883450155939
Product Group	M06288
Number of Mounting Holes	4
Mounting Method	Eccentric Collar
Housing Style	4 Bolt Pillow Block
Rolling Element	Spherical Roller Bearing
Housing Material	Cast Steel
Expansion / Non-expansion	Non-expansion
Mounting Bolts	7/8 Inch
Relubricatable	Yes
Insert Part Number	22226
Seals	Triple Lip Nitrile Rubber
Housing Configuration	1 Piece Solid
Inch - Metric	Inch
Other Features	Double Row
Long Description	4 Bolt Pillow Block; 5" Bore; 5-1/2" Base to Center Height; Eccentric Collar Mount; Spherical Roller Bearing; 15-1/8" Minimum



BEARING Material Product LIMITED

	Bolt Spacing; 15-7/8" Bolt Spacing Maximum; Relubricat
Category	Pillow Block
UNSPSC	31171511
Harmonized Tariff Code	8483.20.40.80
Noun	Bearing
Keyword String	Pillow Block
Manufacturer URL	http://www.qmbearings.com
Weight / LBS	134
Actual Bolt Center to Center	0 Inch 0Millimeter
Bolt Spacing Minimum	15.125 Inch 384.175Millimeter
Nominal Bolt Center to Center	15.5 Inch 393.7 Millimeter
Bolt Spacing Maximum	15.875 Inch 403.225Millimeter
d	5 Inch 127 Millimeter
D	6.04 Inch 153.416 Millimeter
B	5.5 Inch 139.7 Millimeter